

Injuries

- Your child should not arrive at school with an injury that occurred at home to be evaluated by the school nurse. Please have any injury occurring at home evaluated by your physician.
- Please provide a physician's note with any diagnosis, restrictions or orders to be maintained at school. This includes orders for gym and recess.
- If your child is required to have a physician follow up for an injury, please provide any changes in orders and restrictions.
- In case of emergency, contact information should be current. Please contact your child's school with any changes.



Important Guidelines

- The school nurse is available to students who become sick or injured during the school day. If your child needs immediate medical attention, parents will be notified as soon as possible to pick up their child.
- Your child will be sent home if he/she has a temperature of 100 degrees or higher. Your child may return to school when he/she has been fever free for 24 hours without the use of medication.
- Your child should stay home following an episode of nausea, vomiting, diarrhea or fever. He/she may return in 24 hours after the last episode.
- A contagious condition such as pink eye, impetigo, croup, strep throat, chicken pox or rash that may be disease related needs to be treated by a physician. The school nurse should be informed of the diagnosis and treatment.
- Children found with head lice and/or nits (eggs) will be sent home for treatment. A head check must be performed by the school nurse before the student can return to class.

Pottsgrove School District

Health Services



dreamstime.com

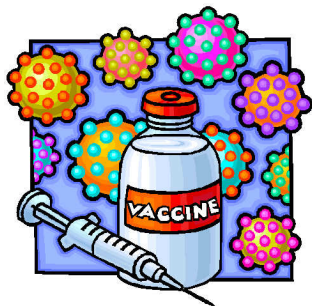
Pottsgrove High School
610-326-5105

Pottsgrove Middle School
610-326-8243

Lower Pottsgrove Elementary
610-323-7510

Ringling Rocks Elementary
610-323-0903

West Pottsgrove Elementary
610-323-6510



Immunizations

- **Pennsylvania State Law requires up-to-date immunizations to attend school.** Completed immunizations must be submitted by the fifth day of school OR the child's physician must provide a medical plan stating when the immunizations will be completed.
- Your child's immunization record is reviewed upon original entry into school and periodically to ensure immunizations are complete and current with the state immunization requirements.
- If any discrepancies or incomplete immunizations are found, parents will be contacted and advised to consult their child's physician.

Reminders

- **Physical Exams** are required for all Kindergarten, Grade 6 and Grade 11 students. Private exams are encouraged. Forms are available on the district website or from the school nurse. School physicals will be available to those students unable to have a private exam completed.
- **Dental Exams** are required for all Kindergarten, Grade 3 and Grade 7 students. Private exams are encouraged. Forms are available on the district website or from the school nurse. School dental exams will be available to those students unable to have a private exam completed.
- Please inform the school nurse regarding any allergies your child has to food, medicine or insects and provide EpiPens and action plans as ordered.
- Please contact the school nurse for any changes to your child's health such as new medical conditions, new medications, or upcoming surgeries.

Medication Policy

- Medication must be brought to school by a parent or other adult designated by the parent. Students may NOT transport medication to or from school.
- All medication that needs to be given to a student while in school must be in the original container from the pharmacy.
- A district medication form must be completed and signed by a physician and a parent. This includes over the counter medication. This form can be found on the district website or it can be obtained from the school nurse.
- A new medication form must be completed each school year.
- At the end of the school year, a parent or other adult designated by the parent must pick up any remaining medication.

